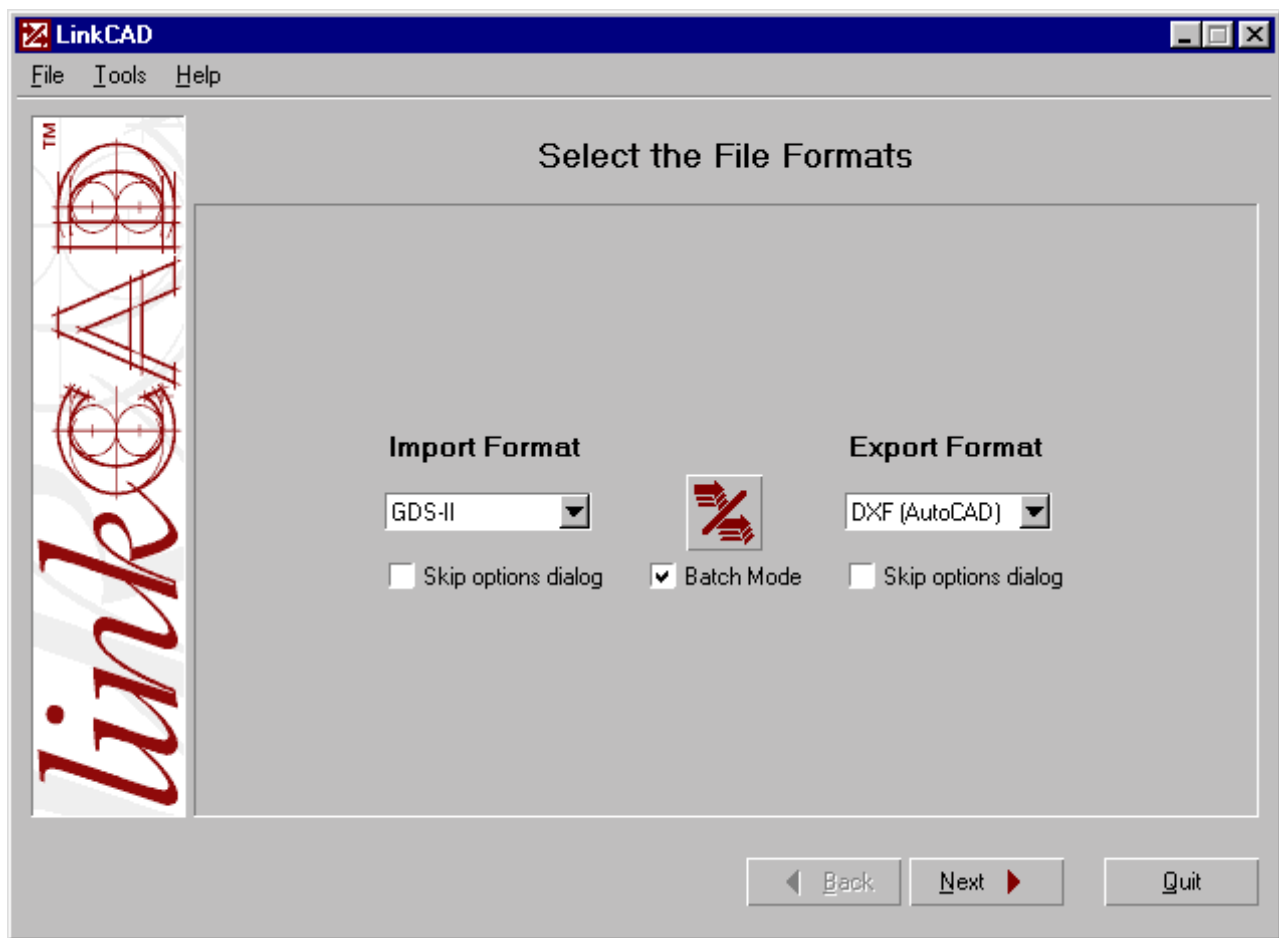


LinkCAD

GDS-II - DXF - CIF - IE3D - Gerber Translation for Packaging - MMIC - IC - MCM Layout

ROBUST TRANSLATOR

LinkCAD Release 3, is a robust and powerful translating utility that will transfer file formats from GDS-II, DXF, CIF or IE3D into any other file format. There are additional Export File Formats for the printing and photoplotting processes. This means LinkCAD will meet all your file transfer needs in one low cost and easy to use program. Import/Export GDS-II to the AutoCAD DXF file format or the reverse. GDS-II, CIF and DXF files can be output to the IE3D Electromagnetic Simulator file format or the reverse. For Photoplotting, Gerber RS-274X Export is available as an option. For high quality prints or masks, a PostScript Output is available in the standard product.



Easy Selection of Import and Export File Formats

EASY SETUP

Easy selection of file formats and unique setup of the format options are available. Just select an Import and Export File Format. For those jobs that require many File conversions, a Batch mode is available so most of the entries are eliminated.

AUTOMATIC EDITING COMMANDS

When converting from one format to another, there are

necessary changes to the geometries in order to meet the new file format specifications. This is done automatically, however, options are available where they are important. Circles in DXF need to be converted to closed polygons for CIF & GDS-II files. Selection of the number of segments to make up a circle is available and is very important. For modellers where a reduced number of segments will keep simulation time to a minimum, or the reverse is required for manufacturing, where a high number of segments are needed.

Repair Open Polygons

Specify how you want LinkCAD to handle open polygons and zero-width wires.

Repair Options

Join adjacent open polygons Tolerance:

Close open polylines

Add width to zero-width lines Width:

DXF Repair of Polygons

An easy Flatten command will remove hierarchy from files for use in hierarchy sensitive applications. Also there are different dialects and CAD release information of a file format that is needed. You can convert AutoCAD Release 14 to AutoCAD Release 12 by simply selecting DXF for both the Import and Export. LinkCAD always exports AutoCAD Release 12 that is compatible with just about everything.

GDS-II The first GDS-II benefit is the unique IntelliSync technology that automatically checks and repairs damaged GDS-II files, so LinkCAD maybe able to read GDS-II files that other systems reject. You can Import and Export the same GDS-II file for repair and use by a less tolerant system. In

addition to this, GDS-II systems have many dialects and can be a serious problem when moving from one system to another or to the fabrication process. Many times you don't know this until you are at that point of the project and find you have compatibility issues. Newer GDS-II CAD systems and process programs will support a large number of vertices in a polygon, while the original CAMA GDS-II will only support 200 vertices. Here again, you can use LinkCAD as a GDS-II Import to a GDS-II Export converter that will break geometries into smaller polygons with a maximum of 200 vertices that is compatible with all GDS-II systems. Where this vertex reduction is most used is in the conversion from DXF to GDS-II. There are no restrictions in AutoCAD to the number of vertices used in a polygon.

GDS II Export Options

Units

User units: Same as imported file

Database units: Database units greater than 1 nm may result in loss of precision!

Arc resolution

Line segments per 360deg:

File options

Flatten file structure

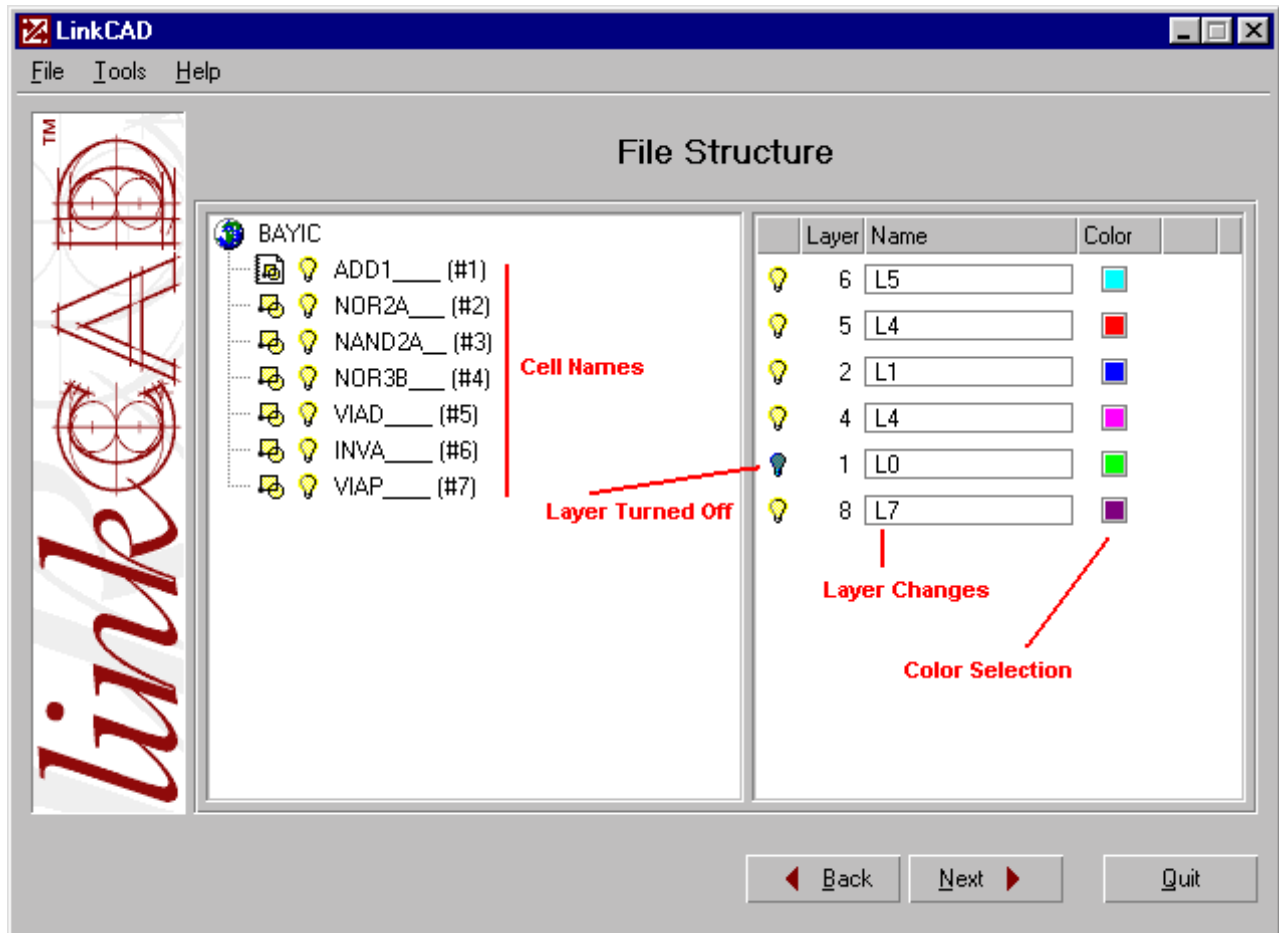
Split polygons and wires with more than 200 vertices

Zero-pad GDS file

GDS-II Export Options

DXF AutoCAD systems are used to create files where they were not necessary intended. As a result, there are potential problems with the geometries created. LinkCAD will fix these shortcomings. The biggest problem is line segments that form a polygon but are separate entities. Or what is known as broken polylines. LinkCAD will automatically attach line

segments together to form closed polygons. Another important change to DXF files is zero-width lines. GDS-II can not accept a zero-width line so a default width can be entered. In addition, if line segments are overlapped, or an interconnect polyline has an open end, a tolerance can be entered and when a faulty line is found, LinkCAD will repair it.



Layer Map Allows changing layer Number and turning off cell/layers and Color Selection

LAYERS

There is an unlimited number of layers supported, with provisions for a selection of the layers that are to be exported. This means that you can import a complete file and export only the layers that are needed. Layer Mapping allows changes to layer numbers and Color selection. Cells can also be turned on or off.

INTERFACES

Format	Direction	Version
<input type="checkbox"/> GDS-II Stream	Import/Export	All
<input type="checkbox"/> DXF	Import/Export	12 & Up
<input type="checkbox"/> CIF	Import/Export	All
<input type="checkbox"/> IE3D	Import/Export	Release 7
<input type="checkbox"/> Gerber RS274-X	Export	Latest
<input type="checkbox"/> PostScript	Export	Latest

ON LINE HELP

Need help understanding a command and are tired of reaching for the manual? With just a key stroke, help files are available for all commands. The entire manual is available from menus. Even a glossary of terms and how to get technical support topics are available.

INTERNET SUPPORTED

Download a Trial Version of LinkCAD, email us the Serial Number, arrange for payment and we email back the Unlock Code to convert the Trial Version into purchased Software. Then or at any time, with just a key stroke, you can confirm you are using the latest software. When you click on the update button, we automatically check your software and upload any new updates that are available.

GERBER RS274-X

Export the latest Gerber RS 274-X that has imbedded Apertures and the advanced polygon format. This keeps the files small and eliminates the need to hand enter an Aperture list. All of the file structure is available for easy entry. Enter accuracy values, if you want rectangle and circle flash and polygon creation. Turn on or off layers and change layer file names gives you the flexibility you need.

Arcs / Circles Representation

Use circular interpolation

Use lines (per 360deg:)

Geometry Settings

Default line width:

Use step & repeat

Coordinates Format

.

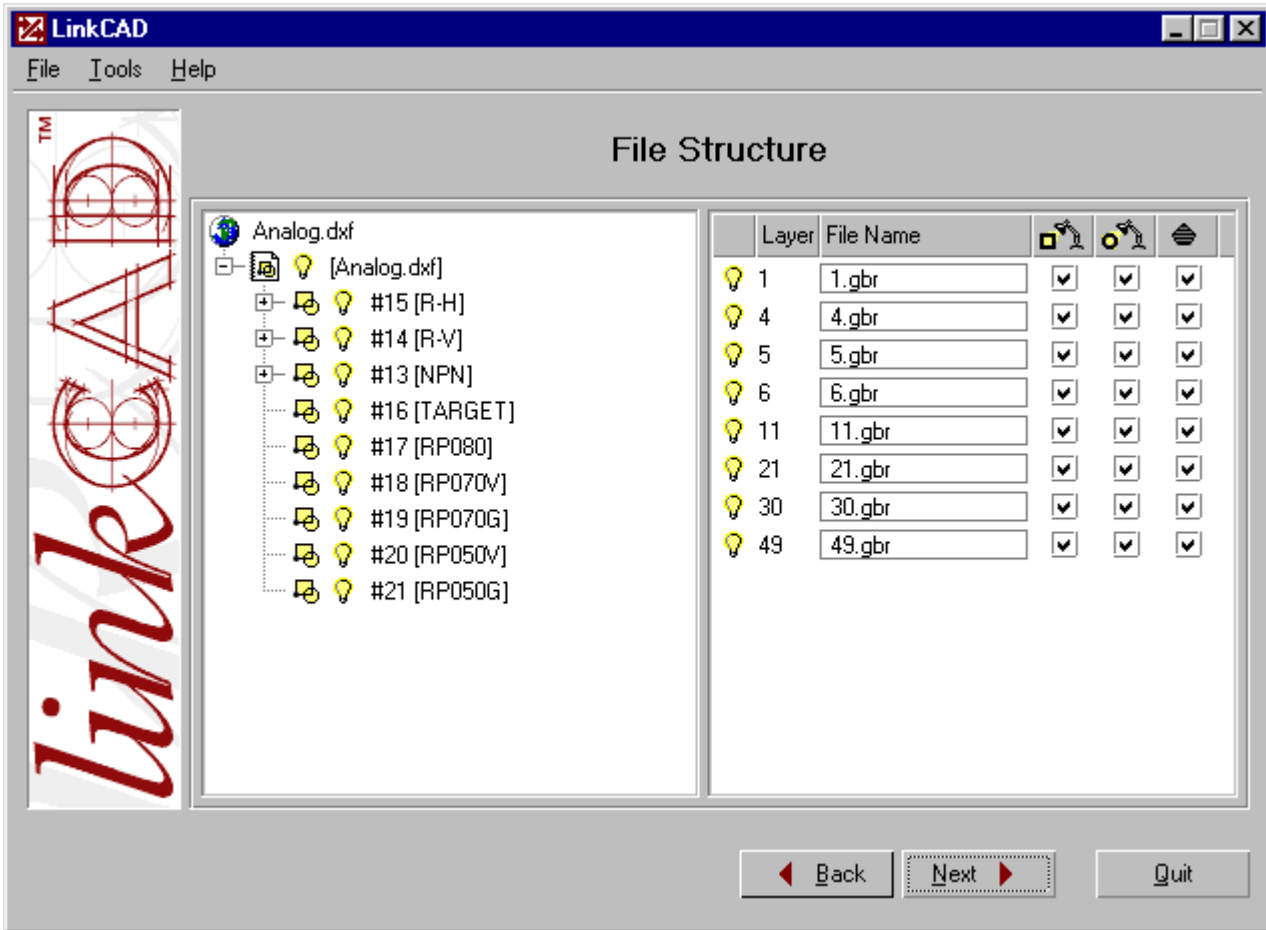
Imperial Leading Absolute
 Metric Trailing Relative

File Format

EOD character: Parameter delimiter:

Line breaks: DOS/Windows UNIX None

Gerber RS 274X File Structure



Gerber RS 274X Layer and Flash Setup Menu

SYSTEM REQUIREMENTS

PC operating with: Windows NT/2000 or Windows 95/98
with at least 16M bytes of RAM

PRICE

[Download 15 day Trial Version from Web](#)

\$ 500 - Gerber Option \$ 250

University \$ 150 - Gerber Option \$ 75



1711 Trout Gulch Road
Aptos, CA 95003
(831) 688-8919

FAX (831) 688-6435

web www.bay-technology.com

LinkCAD is a trademark of Daniel Gehriger/Bay Technology
IE3D is a trademark of Zeland Software, Inc.
Windows NT/2000 95/98 is a trademark of Microsoft Corp.
GDS-II is a trademark of Cadence Corp.
DXF is a trademark of Autodesk, Inc.